



# INTERCULTURAL TRANSFER OF KNOWLEDGE

# OUR WORLD TODAY

## GLOBAL CHALLENGES

**748 million**

lack clean water

**1.4 billion**

lack access to electricity

**2.5 billion**

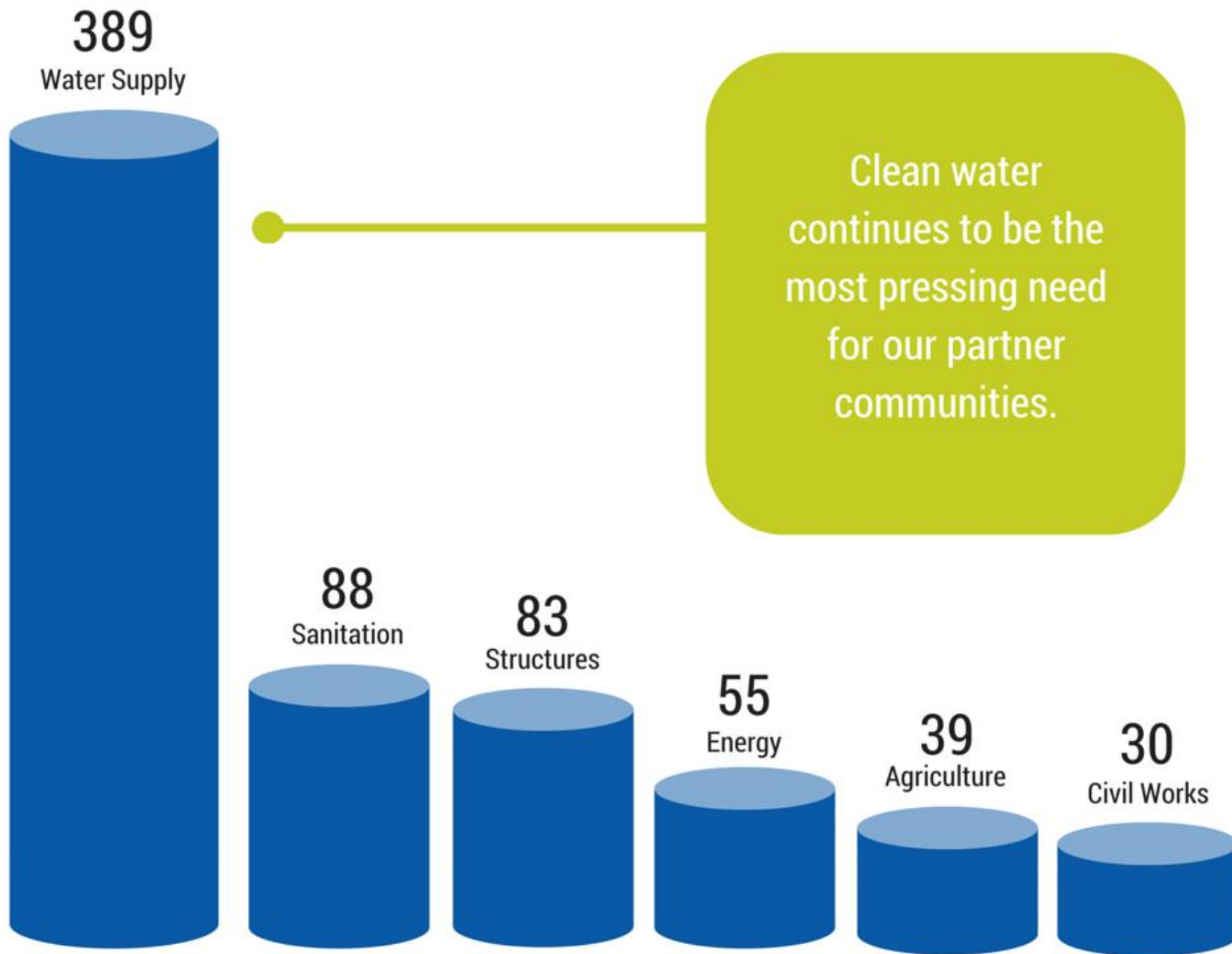
lack adequate sanitation

**2.7 billion**

rely on biomass energy for  
cooking









14,700  
MEMBERS

286  
CHAPTERS

72%  
STUDENTS

28%  
PROFESSIONALS



684

Community-driven  
development  
projects

39

Countries





Community-*initiated*  
*driven*  
*maintained*



# EWB at Arizona State University

Student Chapter







ENGINEERS WITHOUT BORDERS USA  
ARIZONA STATE UNIVERSITY CHAPTER

60 STUDENTS

10 PROFESSIONAL  
MENTORS

2 COMMUNITIES

5 CURRENT PROJECTS





# OUR LEGACY

## ASU-EWB's Past Projects

### ECUADOR (2005-2010)

- Dam and reservoir
- Water treatment and distribution



### KENYA (2010-2016)

- Rainwater catchment
- Dam rehabilitations
- Hydraulics Lab @ local college





# OUR LEGACY

## ASU-EWB's History of Excellence



- 2012** DEAN'S AWARD FOR OUTREACH
- 2012** DELL SOCIAL INNOVATION CHALLENGE SEMI-FINALIST
- 2012** ARIZONA STATE UNIVERSITY INNOVATION CHALLENGE FINALIST
- 2013** OUTSTANDING ENGINEERING EMERGING STUDENT ORGANIZATION LEADER – BRITTANY DUONG
- 2012** BEST ENGINEERING STUDENT ORGANIZATION FUNDRAISER – ANNUAL KENYA DIG IT? 5K RUN
- 2015** OUTSTANDING UNDERGRADUATE STUDENT ORGANIZATION
- 2015** OUTSTANDING SUSTAINABLE PROJECT
- 2016** OUTSTANDING ENGINEERING FACULTY ADVISOR DR. KAVAZANJIAN
- 2016** OUTSTANDING EMERGING STUDENT ORGANIZATION LEADER – MARISOL LUNA AGUERO
- 2016** OUTSTANDING PROFESSIONAL DEVELOPMENT ENGINEERING STUDENT ORGANIZATION LEADER DANIELA PANFIL



# BONDO, KENYA

## Hydraulics Project



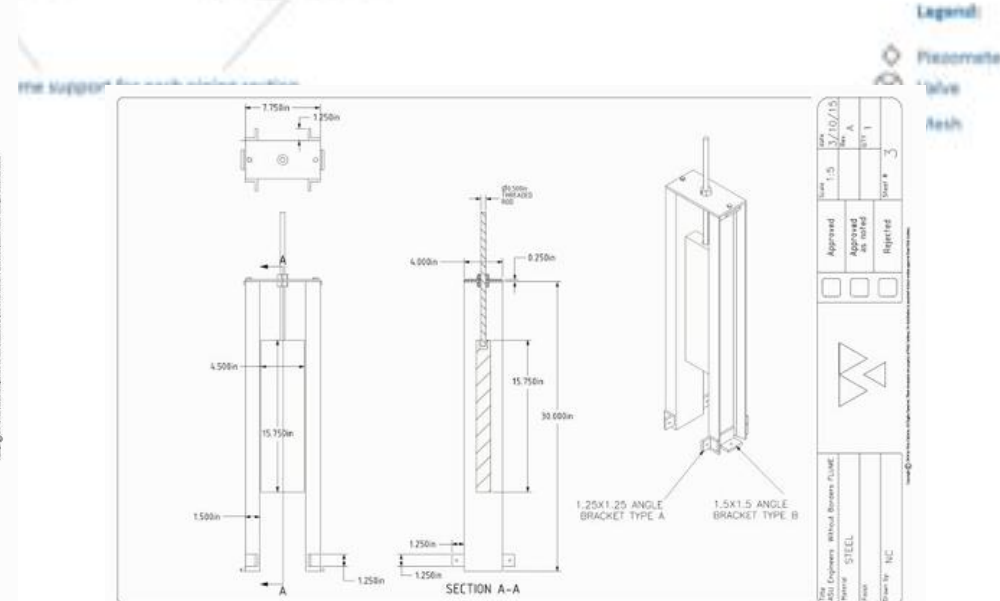


# The Way We Work

Focused on building community and sustainability



Copyright © 2009 by John Wiley & Sons, Inc. All rights reserved. No part of this publication may be reproduced, stored in a retrieval system, or transmitted, in any form or by any means, electronic, mechanical, photocopying, recording, scanning, or otherwise, without prior written permission from John Wiley & Sons, Inc.







TO REALITY







# Larger Impact

First hydraulics lab in Western Kenya



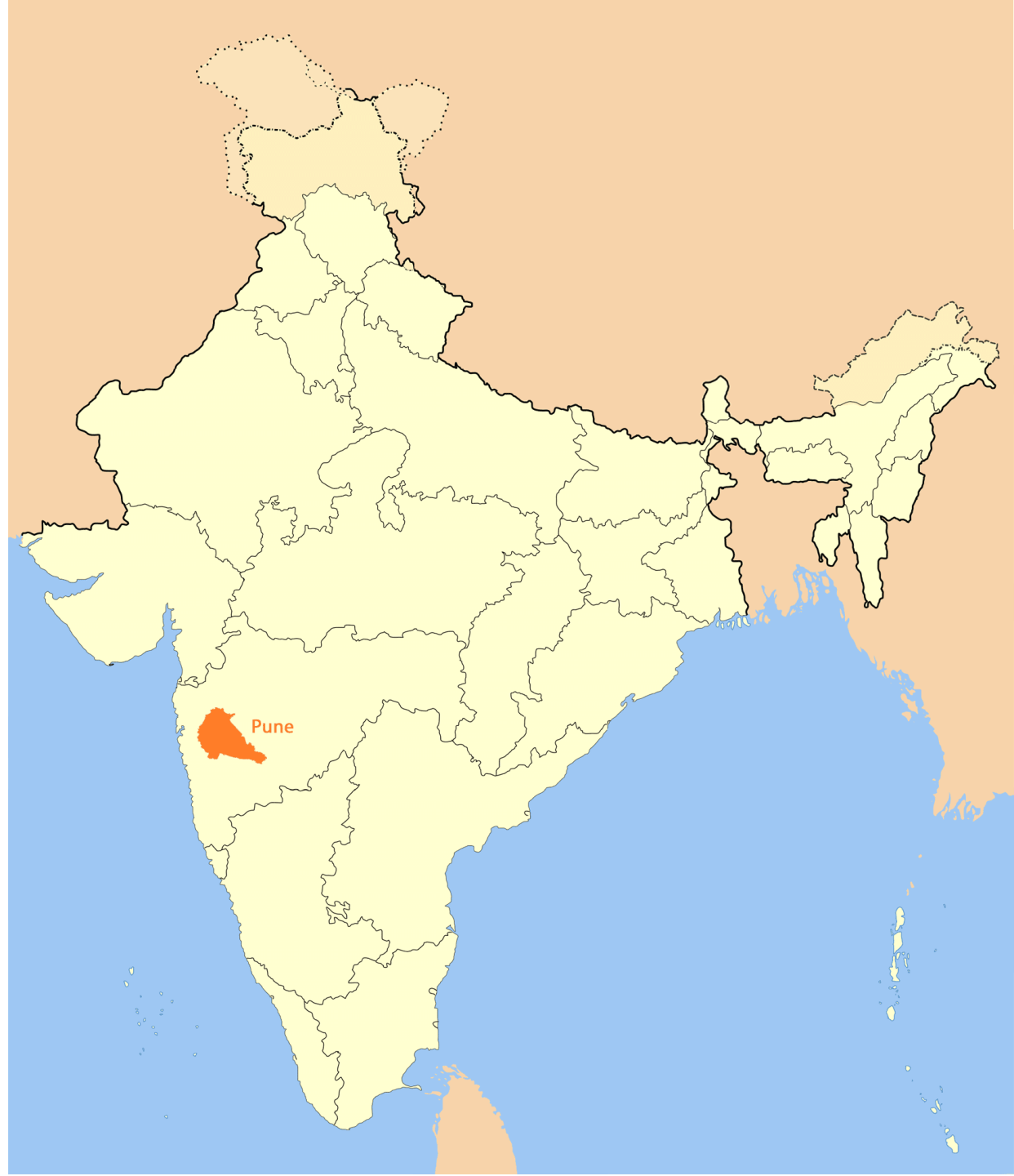


# India Project

19 05 2013

# India Project

- Assessment trip in December
- Partnership with local university



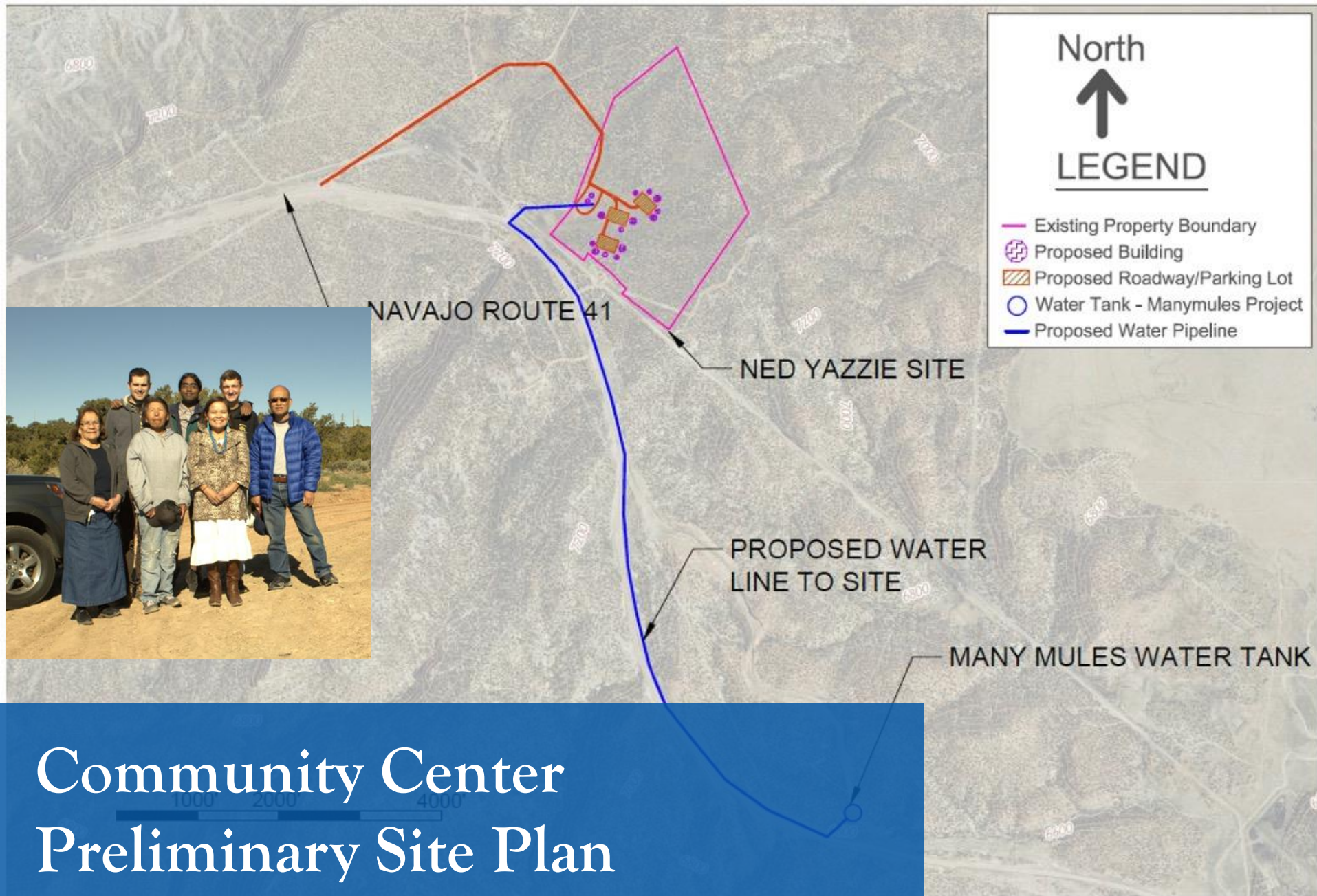


# LOCAL PROJECTS

## With the Navajo Nation









# Mountain Biking Project







12 Mile Trail



Pump Track



# Agriculture Project



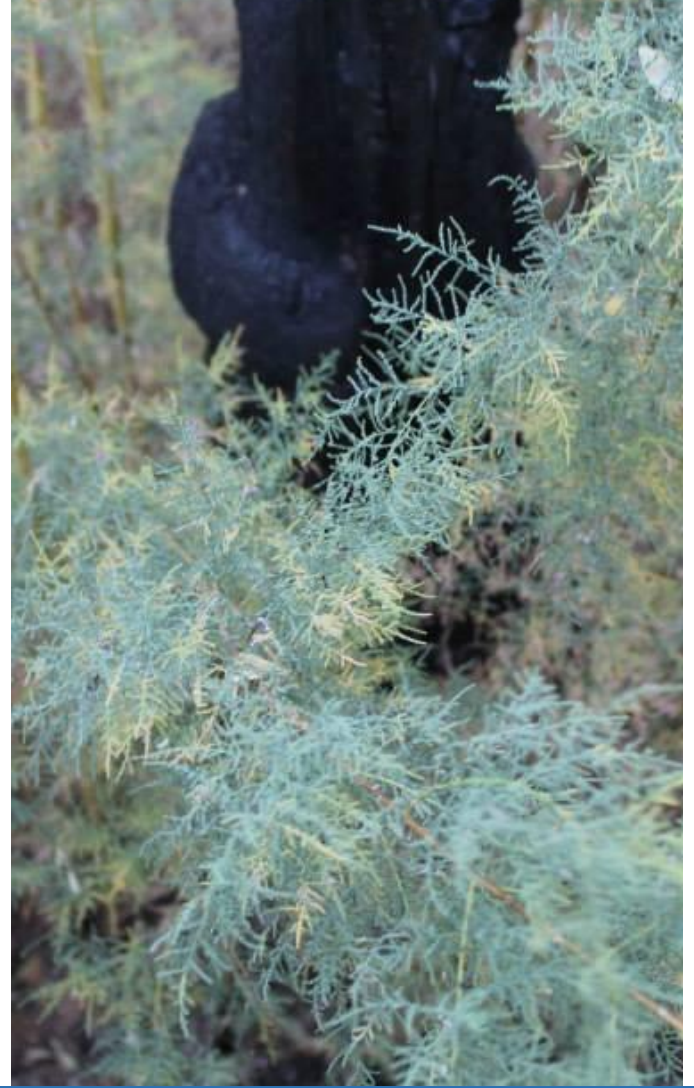




# Solar Project

For about 15 homes currently  
without electricity





# Tamarisk Project



# MENTORS MATTER





# How To Get Involved

- Become a mentor at ASU
- We need engineering speakers
- We need sponsors





# RUN WITHOUT BORDERS 5K

- We need sponsors for our 5K run.
- Benefits of becoming one?
  - Logo on shirt
  - Chance to recruit students
  - 100% of donations go to EWB-ASU





A group of people are working on a large, black metal frame structure in a room with large, multi-paned windows. A man in a light grey t-shirt and shorts is standing on the left, looking at the structure. A woman in a light blue long-sleeved shirt and black pants is sitting on a wooden table in the center, looking at the structure. Another woman in a pink shirt is standing behind her. A man in a dark blue polo shirt and blue pants is standing on the right, looking down. The room has a high ceiling and a concrete floor. There are some concrete blocks and debris on the floor in the foreground.

# Summary

- Our model is sustainable
- We work locally and internationally
- We need mentors
- We need funding



# THANK YOU!



[facebook.com/EWB.USA.ASU](https://facebook.com/EWB.USA.ASU)

**Search: Engineers Without Borders - Arizona State University**



[studentorgs.engineering.asu.edu/ewb/](http://studentorgs.engineering.asu.edu/ewb/)



[@asuewb](https://twitter.com/asuewb)

